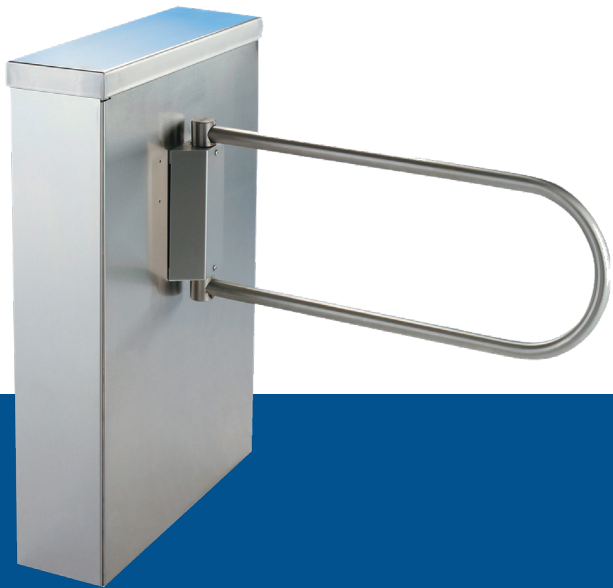


Waist High ADA Gate

DS500-ADA Swing gate

Interior and Exterior Application

The DS500-ADA Series is made for years of reliable service in high traffic/high volume applications like stadiums, convention centers, landmarks and military bases. The cabinets are constructed of heavy 14-gauge, 300 series satin stainless steel and feature our 6500 Series Control Head (with auto indexing and shock suppression technology). The DS500-ADA is the ticket to managing large crowds with reliability and speed.



DS500-ADA SERIES



FEATURES AND BENEFITS

- Bidirectional key overrides (fail open only)
- Daylight visible indicator lights
- 8 digit key resettable LCD counter with seven year lithium battery
- ADA push to exit placard button
- Variable arm lengths (up to 40")
- Signage bracketry
- Variable speed self-opening motorized arm
 - *Comes with safety clutch to prevent injury
- Coin/token acceptor
- Bill acceptor
- Ticket drop box
- Additional options available on request

DSI[®]
DESIGNED SECURITY, INC.
Building Security

1402 Hawthorne St.
Bastrop, Texas 78602
Voice: 1-800-272-3555
Fax: 1-512-321-9181
E-mail: dsi@dsigo.com
www.dsigo.com

Applications:

This ADA compliant unit is the matched partner to the DS500 Series waist-high turnstiles, which are made for years of reliable service in high traffic / high volume environments like stadiums, convention centers, amusement parks, landmarks and military bases.

Product Features:

Cabinets are finished in:

- Our signature 304 stainless steel/No. 4 satin finish

Design & Construction:

- Designed for secure operation with aesthetics in mind
- Cabinet inner and outer shells are constructed of (14 gauge) 304 stainless steel/No. 4 satin finish
- Arms constructed of 1-5/16" (33.4mm) diameter (12 gauge) stainless
- Triple strand chain drive with adjustable chain tensioners
- Minimal exposed hardware

Measures:

- Height: 38.062" (966.8mm)
- Width: 27.437" (696.9mm)
- Depth: 11" (279.4mm)
- Arm length: 36" (914mm)

Operation:

Control Head, featuring:

- Auto-indexing (self-centering) with adjustable hydraulic shock suppression
- Hardened tool steel locking bars, cam and roller assemblies
- Permanently lubricated bearings
- Your choice of manual or electronic control on both directions
- Nearly universal integration to any number of access control systems
- Your choice on each electronic direction of locking or unlocking on power failure

Options:

- Bidirectional key overrides (fail open only)
- Daylight visible indicator lights
- 8 digit key resettable LCD counter with seven year lithium battery
- ADA push to exit placard button
- Variable arm lengths (up to 40")
- Signage bracketry
- Variable speed self-opening motorized arm *Comes with safety clutch to prevent injury
- Coin/token acceptor
- Bill acceptor
- Ticket drop box
- Additional options available on request

Matching Waist High Turnstile

Our matching waist high turnstile (DS500) is available for the DS500-ADA series

Electrical Specifications:

Input voltage: 100-240 VAC
 Input current: 1.3 - .55 A
 Frequency: 50/60 Hz

Storage Temperature: -40 to 158°F
 Operating Temperature: -4 to 131°F
 (cold weather package available)

Operating voltage: 24VDC
 Operating current: 1.2 A (typical)

Standards and Codes:

Austenitic stainless steel:
 ASTM A240, A249, A276
 Hot rolled steel:
 AISI C-1020, AISI C-1018
 Hot dipped galvanizing:
 ASTM A-143, ASTM A-153-80
 Stainless steel fasteners:
 ASTM A-320
 American Welding Society (AWS)
 Standard D 1.1

Warranty:

Units are warranted against defects in materials and workmanship for a period of one year from date of invoice.



1402 Hawthorne St.
Bastrop, Texas 78602
Voice: 1-800-272-3555
Fax: 1-512-321-9181
E-mail: dsi@dsigo.com
www.dsigo.com

