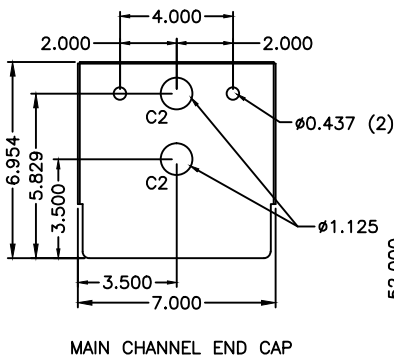


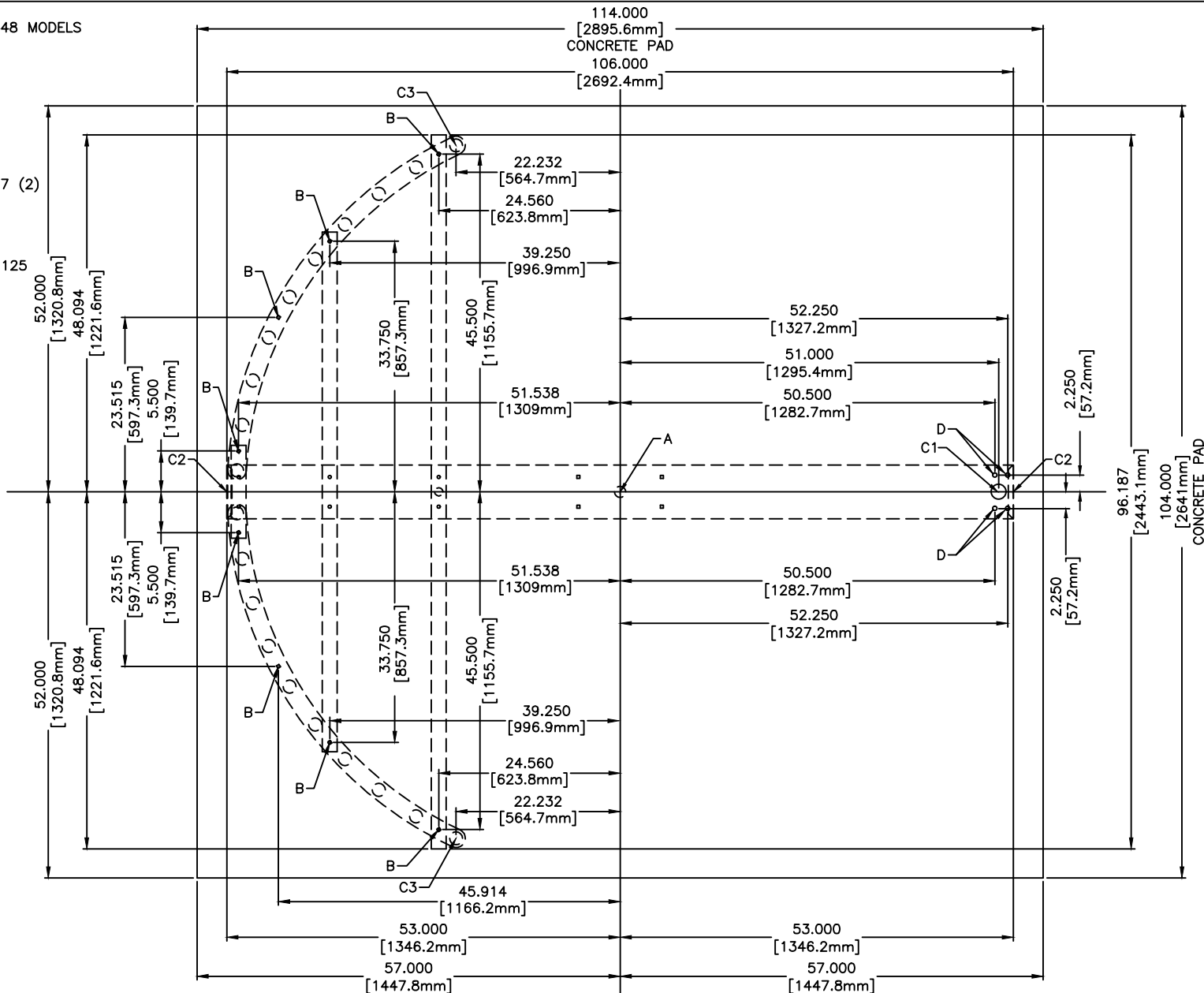
FOR USE ON STAINLESS STEEL DS448 MODELS



ANCHOR POINTS
 A = ϕ .625 X 4.500 STAINLESS STEEL CONCRETE ANCHOR QTY 1
 B = ϕ .375 X 4.500 STAINLESS STEEL CONCRETE ANCHOR QTY 8
 C = ϕ .500 X 4.500 STAINLESS STEEL CONCRETE ANCHOR QTY 4

SUGGESTED CONDUIT LOCATION
 C1 = THROUGH VERTICAL BARRIER (PREFERRED)
 C2 = THROUGH MAIN CHANNEL END CAP (TYP BOTH SIDES)
 C3 = THROUGH VERTICAL YOKE TUBE

CONCRETE PAD NOTE:
 POUR PAD 4.000 [101.6mm] - 6.000 [152.4mm] THICK,
 AND INSURE IT IS LEVEL \pm .125 [3.1mm]



1. ALL DIMENSIONS ARE APPROXIMATE
2. DIMENSIONS ARE IN INCHES (mm)
3. DO NOT SCALE DRAWING

DSI CONFIDENTIAL
 PROPRIETARY INFORMATION
 This document and the data disclosed herein is not to be reproduced, used, or disclosed in whole or in part without the permission of DESIGNED SECURITY INC.

MATERIAL: STAINLESS STEEL	SCALE: 1=20	APPROVED BY:	DRAWN BY: LC III
	DATE: 1/14/14		REVISED: 10/2018
FINISH: TOL. UNLESS OTHERWISE SPEC. .X \pm .1 .XXX \pm .015 .XX \pm .03 ANGLES .5'	330-273-6185 FAX 330-273-4468 USA 1-800-942-0829 FAX 1-800-942-0828		
		DS448-SS ANCHOR POINTS\CONDUIT 2018	