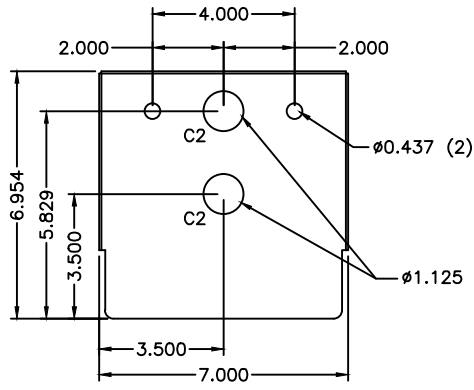
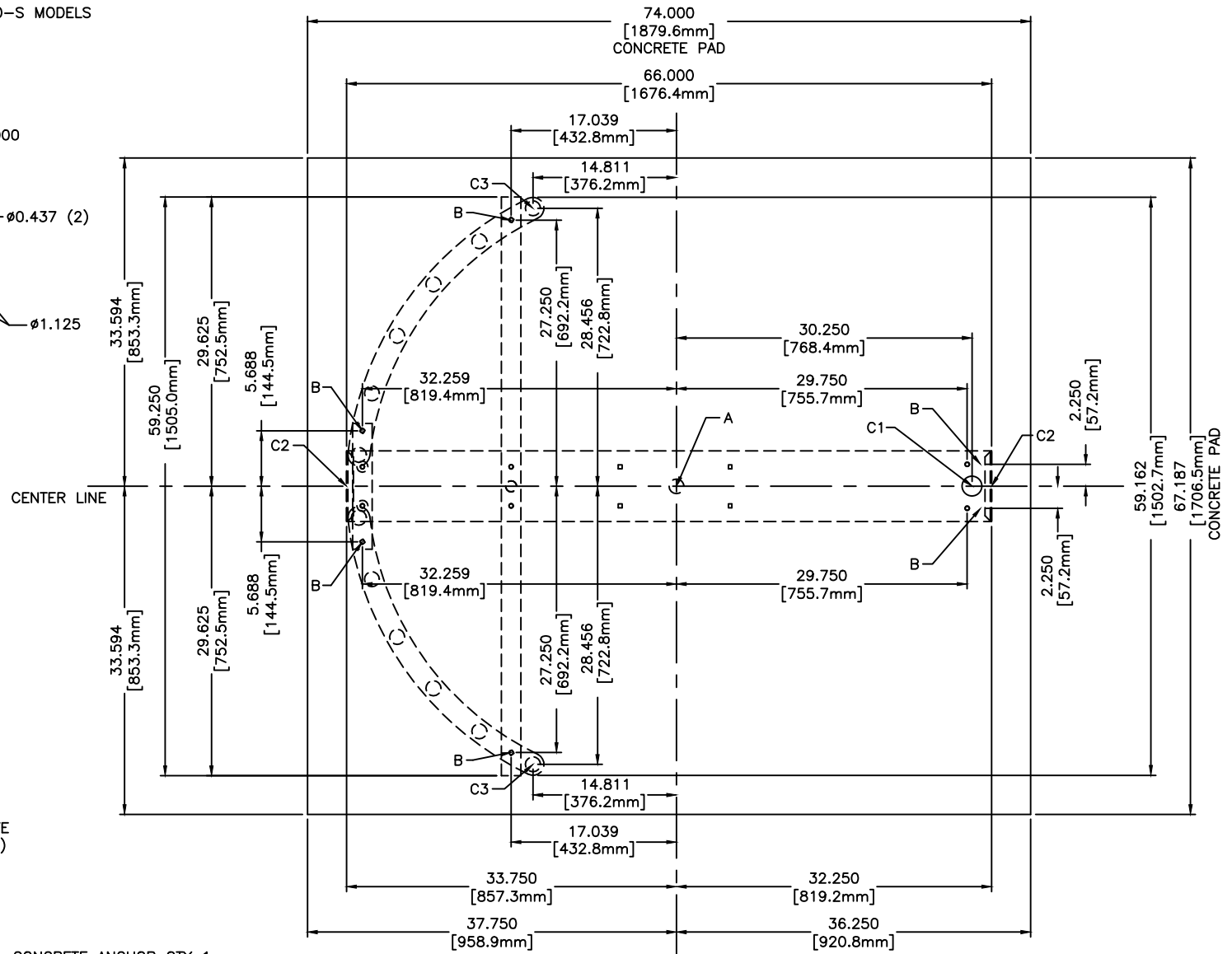


FOR USE ON STAINLESS STEEL DS430-S MODELS



MAIN CHANNEL END CAP



1. ALL DIMENSIONS ARE APPROXIMATE
2. DIMENSIONS ARE IN INCHES (mm)
3. DO NOT SCALE DRAWING

ANCHOR POINTS

- A = ϕ .625 X 4.500 STAINLESS STEEL CONCRETE ANCHOR QTY 1
- B = ϕ .375 X 4.500 STAINLESS STEEL CONCRETE ANCHOR QTY 6

SUGGESTED CONDUIT LOCATION

- C1 = THROUGH VERTICAL BARRIER (PREFERRED)
- C2 = THROUGH MAIN CHANNEL END CAP (TYP BOTH SIDES)
- C3 = THROUGH VERTICAL YOKE TUBE

CONCRETE PAD NOTE:

POUR PAD 4.000 [101.6mm] - 6.000 [152.4mm] THICK, AND ENSURE IT IS LEVEL \pm .125 [3.1mm]

DSI CONFIDENTIAL
 PROPRIETARY INFORMATION
 This document and the data disclosed herein is not to be reproduced, used, or disclosed in whole or in part without the permission of DESIGNED SECURITY INC.

MATERIAL: 304 STAINLESS STEEL	SCALE: 1=16	APPROVED BY:	DRAWN BY: LC III
	DATE: 1/13/14		REVISED: 10/2018
FINISH: NO. 4 SATIN	TOL. UNLESS OTHERWISE SPEC.		330-273-6185
.X \pm .1	.XXX \pm .015		FAX 330-273-4468
.XX \pm .03	ANGLES .5°		USA 1-800-942-0829
			FAX 1-800-942-0828