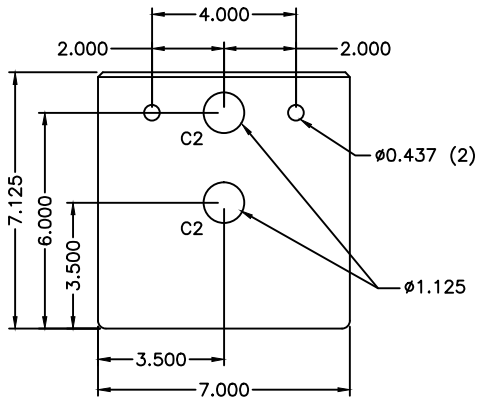
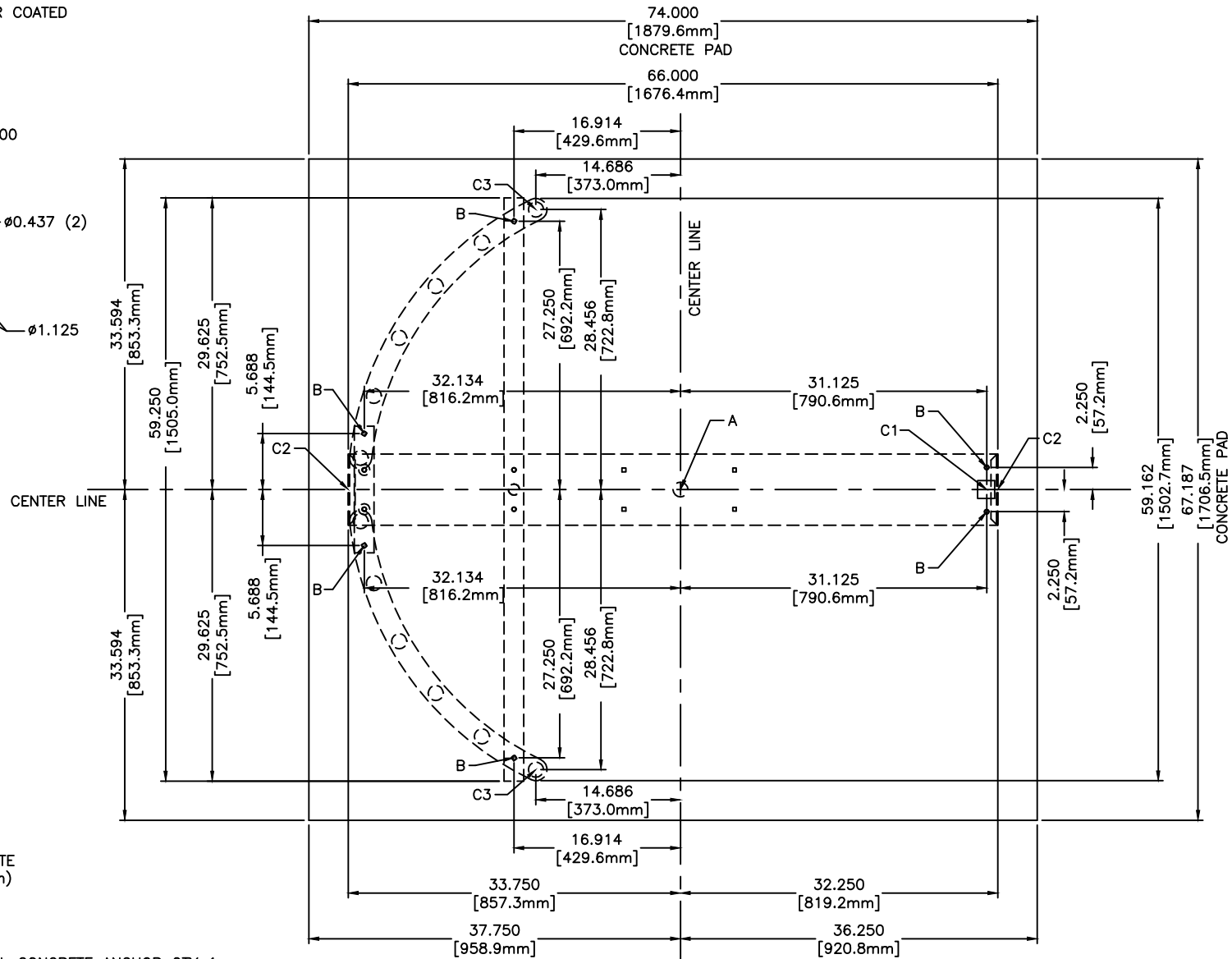


FOR USE ON GALVANIZED OR POWDER COATED
DS430-S MODELS



MAIN CHANNEL END CAP



1. ALL DIMENSIONS ARE APPROXIMATE
2. DIMENSIONS ARE IN INCHES (mm)
3. DO NOT SCALE DRAWING

ANCHOR POINTS

- A = ϕ .625 X 4.500 STAINLESS STEEL CONCRETE ANCHOR QTY 1
- B = ϕ .375 X 4.500 STAINLESS STEEL CONCRETE ANCHOR QTY 6

SUGGESTED CONDUIT LOCATION

- C1 = THROUGH VERTICAL BARRIER (PREFERRED)
- C2 = THROUGH MAIN CHANNEL END CAP (TYP BOTH SIDES)
- C3 = THROUGH VERTICAL YOKE TUBE

CONCRETE PAD NOTE:

POUR PAD 4.000 [101.6mm] - 6.000 [152.4MM] THICK,
AND ENSURE IT IS LEVEL \pm .125 [3.1mm]

DSI CONFIDENTIAL
PROPRIETARY INFORMATION
This document and the data disclosed
herein is not to be reproduced, used, or
disclosed in whole or in part without
the permission of DESIGNED SECURITY INC.

MATERIAL: N/A	SCALE: 1=16	APPROVED BY:	DRAWN BY: LC III
	DATE: 1/13/14		REVISED: 10/2018
FINISH: TOL. UNLESS OTHERWISE SPEC. .X \pm .1 .XXX \pm .015 .XX \pm .03 ANGLES .5'	330-273-6185 FAX 330-273-4468 USA 1-800-942-0829 FAX 1-800-942-0828		DS430-S GV\PC ANCHOR POINTS\CONDUIT 2018