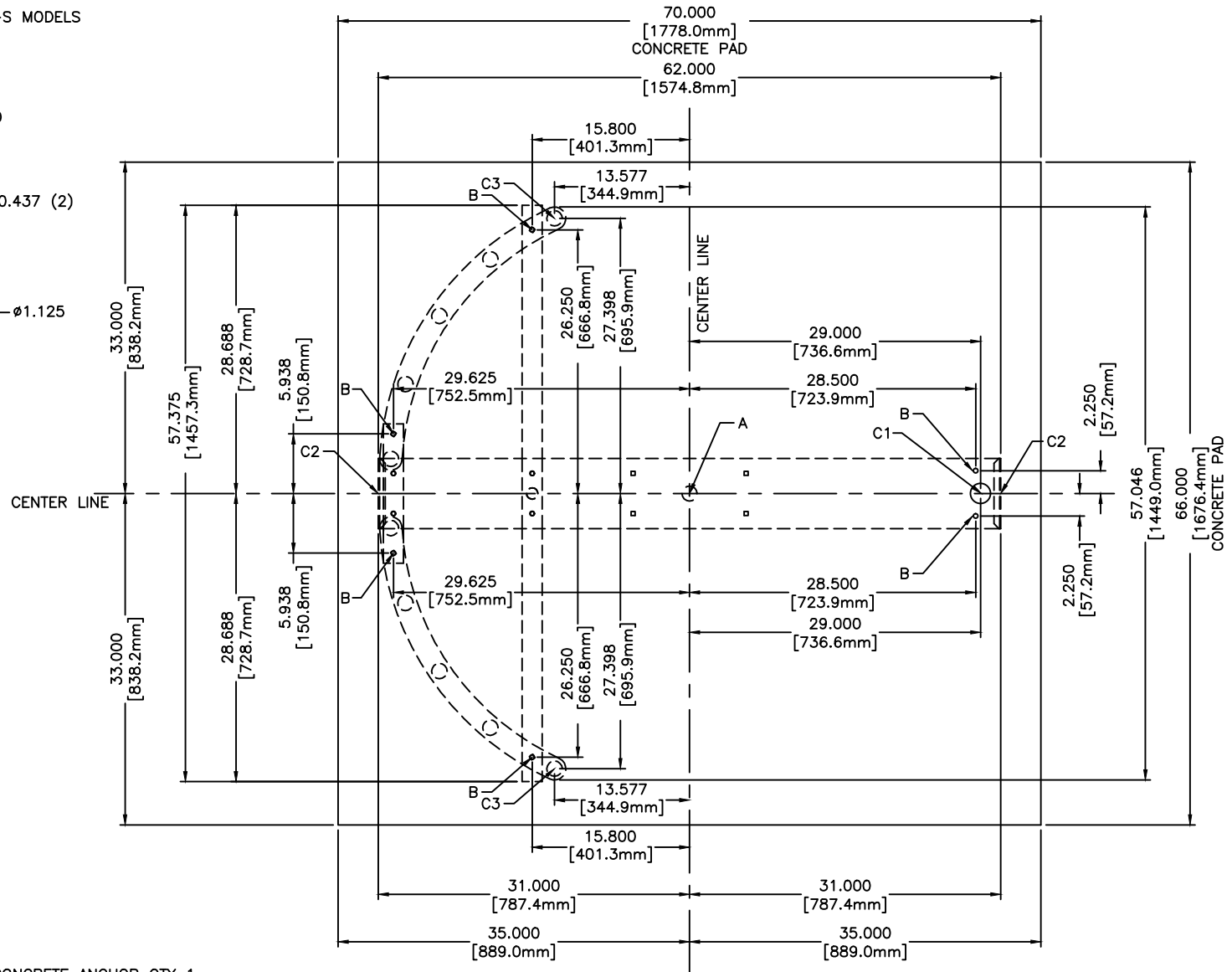
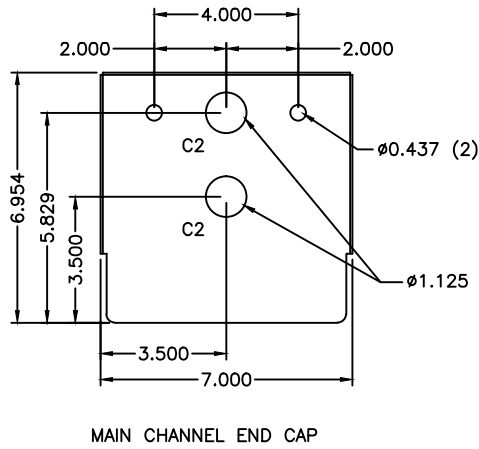


FOR USE ON STAINLESS STEEL DS427-S MODELS



1. ALL DIMENSIONS ARE APPROXIMATE
2. DIMENSIONS ARE IN INCHES (mm)
3. DO NOT SCALE DRAWING

**ANCHOR POINTS**

- A = 0.625 X 4.500 STAINLESS STEEL CONCRETE ANCHOR QTY 1
- B = 0.375 X 4.500 STAINLESS STEEL CONCRETE ANCHOR QTY 6

**SUGGESTED CONDUIT LOCATION**

- C1 = THROUGH VERTICAL BARRIER (PREFERRED)
- C2 = THROUGH MAIN CHANNEL END CAP (TYP BOTH SIDES)
- C3 = THROUGH VERTICAL YOKE TUBE

**CONCRETE PAD NOTE:**

POUR PAD 4.000 [101.6mm] - 6.000 [152.4MM] THICK, AND ENSURE IT IS LEVEL ±.125 [3.1mm]

DSI CONFIDENTIAL  
 PROPRIETARY INFORMATION  
 This document and the data disclosed herein is not to be reproduced, used, or disclosed in whole or in part without the permission of DESIGNED SECURITY INC.

MATERIAL:	SCALE: 1=16	APPROVED BY:	DRAWN BY: LC III
304 STAINLESS STEEL	DATE: 1/13/14		REVISED: 10/2018
FINISH: NO. 4 SATIN			330-273-6185 FAX 330-273-4468
TOL. UNLESS OTHERWISE SPEC.			USA 1-800-942-0829 FAX 1-800-942-0828
.X ± .1 .XXX ± .015			
.XX ± .03 ANGLES .5°			