

# ES631

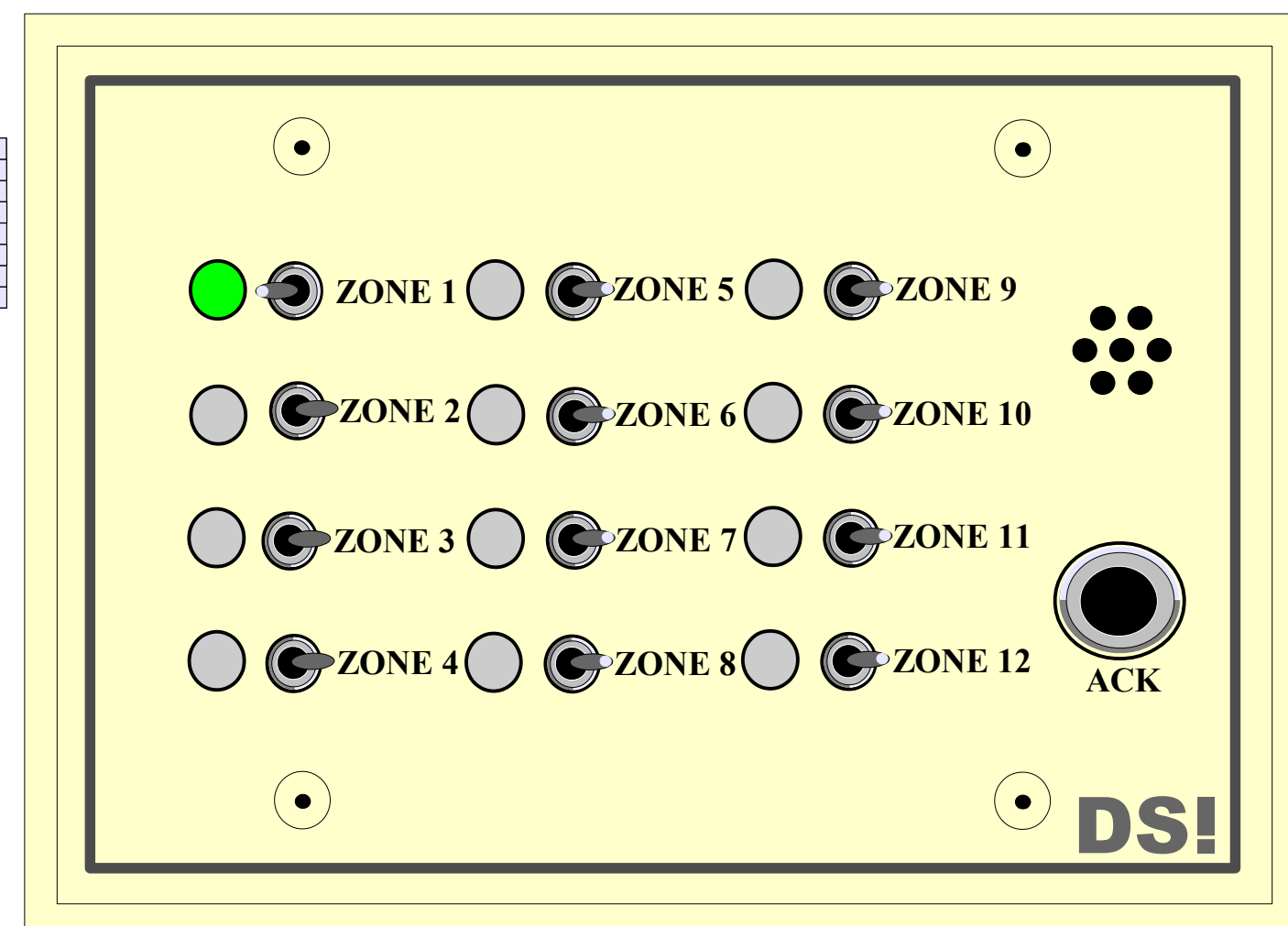
## 12 ZONE ANNUNCIATOR WITH SHUNT



1-800-272-3555

12-VDC  
500mA  
Power Supply  
*Sold Separately*

Shunt Switch  
*Toggle to the left to  
shunt the zone.  
(Example; zone one)*

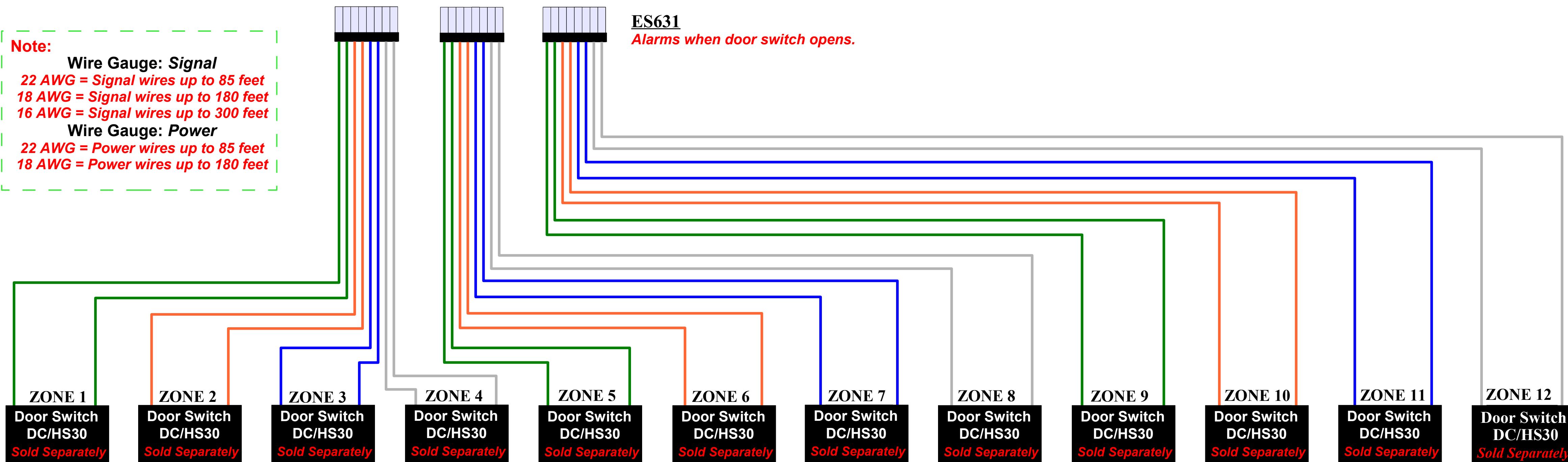


**Note:**  
For four zones use an **ES611**  
For Eight zones use an **ES621**

**Specifications:**  
Power: 12VDC at (500ma)  
Input: N/C door contact  
Output: N/O global alarm relay 500mA @ 30 VDC  
Horn Volume: 70 db  
Back box: 3 Gang 2.5" deep

Global Alarm Relay  
*N/O dry contact.  
500mA @30VDC*

**Note:**  
**Wire Gauge: Signal**  
22 AWG = Signal wires up to 85 feet  
18 AWG = Signal wires up to 180 feet  
16 AWG = Signal wires up to 300 feet  
**Wire Gauge: Power**  
22 AWG = Power wires up to 85 feet  
18 AWG = Power wires up to 180 feet



**ES631**  
*Alarms when door switch opens.*