

Full Height Turnstile

DS400 High Security Series - Tandem

Interior & Exterior Application

Designed Security, Inc. offers the most reliable full height turnstiles available. The High-Security Series can be engineered to meet all your security and control requirements, and can be used as stand-alone units, or as part of an integrated system. Available in stainless steel, powder coat or a hot-dipped galvanized finish, these units can be fitted for any application with leading edge technology and features.



FEATURES AND BENEFITS

- Your choice of galvanized carbon steel, polyester enamel or 304 stainless steel
- Automatic indent Feather-Touch action that includes shock suppressor technology and a non-entrapment design
- Fail-Open or Fail-Secure locking
- Minimal exposed hardware
- Meets ASTM standards
- Aesthetically pleasing



DS400 Series Tandem

Size Options

	Depth	Width	Passage Width	Passage Height	Overall Height
	A *	B *	C *	D *	E *
DS427-T	57" 1448mm	94" 2388mm	27" 686mm	84" 2134mm	91" 2311mm
DS430-T	59.1" 1501mm	102" 2591mm	30" 762mm	84" 2134mm	91" 2311mm

* See CAD drawings on reverse side

DSI[®]
DESIGNED SECURITY, INC.
Building Security

1402 Hawthorne St.
Bastrop, TX 78602
Voice: 1-800-272-3555
Fax: 1-512-321-9181
E-mail: dsi@dsigo.com
www.dsigo.com

DS400 High Security Series (Tandem)- Interior & Exterior Application

Applications:

Ideal for controlling orderly flow of foot traffic in both indoor and outdoor settings.

Product Features:

Materials and Finishes available in your choice of:

- Hot dipped galvanized carbon steel
- Polyester enamel on carbon steel (standard color is black / other colors available upon request)
- Our signature 304 Stainless Steel / No. 4 satin finish

Design & Construction:

- Designed for secure operation with aesthetics in mind.
- Featuring fully welded exterior components
- Minimal exposed hardware
- Heavy gauge materials meeting ASTM standards

Controller &

Access Control Operation:

- Self-centering control head with adjustable hydraulic shock suppression
- Hardened tool steel locking bars, cam and roller assemblies
- Permanently lubricated bearings
- All units are available in clockwise, counter-clockwise or bi-directional passage

Measures:

DS427-T

Size of Opening (Pedestrian Clearance)

DS427-T 27" (686mm)

Arm and Barrier Tubing Sizes

DST80T (Tandem)

1 1/2" diameter 14 gauge (38mm)

1 3/4" diameter 14 gauge (44mm)

Width

94" (2388mm)

Depth

54" (1372mm)

DS430-T

Size of Opening (Pedestrian Clearance)

DS430-T 30" (762mm)

Arm and Barrier Tubing Sizes

DST80T (Tandem)

1 1/2" diameter 14 gauge (38mm)

1 3/4" diameter 14 gauge (44mm)

Width

102" (2591mm)

Depth

56" (1422mm)

All Models:

Overall exterior height 91" (2311mm)

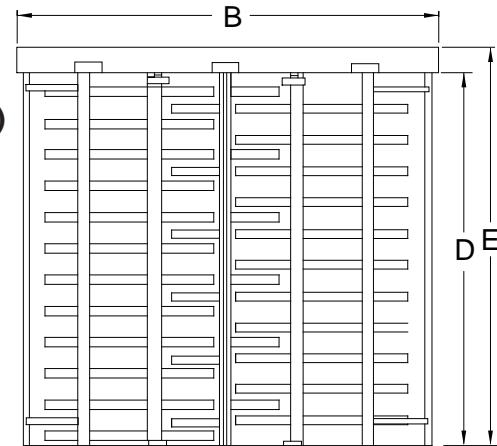
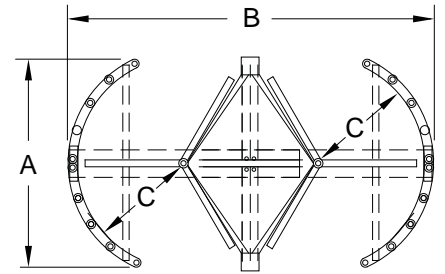
Pedestrian walk through height 84" (2134 mm)

Options:

- Manual key override - both directions
- Integration with card readers, computer attendance systems, coin and token acceptors, push buttons, wireless remote controls and metal detectors
- Electronic 6 digit resettable counter with LCD display and ten-year lithium battery
- Vertical Graphic Array (VGA) red x / green arrow
- Additional options available on request

Matching Swing Gate available

(see model DS336 Manual Passage Gate information)



Electrical Specifications:

Command Module input 110-240 VAC (2 amp-1 amp) 50-60 Hz; control voltage 24 VDC.

All electrical components are UL recognized and CSA certified

Standards and Codes:

Austenitic stainless steel:
ASTM A240, A249, A276

Hot rolled steel:
AISI C-1020, AISI C-1018

Hot dipped galvanizing:
ASTM A-143, ASTN A-153-80

Stainless steel fasteners:
ASTM A-320

American Welding Society (AWS)
Standard D 1.1

Warranty:

Units are warranted against defects in materials and workmanship for a period of one year from date of invoice.

DSI® 1402 Hawthorne St.
Bastrop, TX 78602
Voice: 1-800-272-3555
Fax: 1-512-321-9181
E-mail: dsi@dsigo.com
www.dsigo.com
DESIGNED SECURITY, INC.
Building Security